

infotec

Digital network

The efficient centralised solution: copier, printer, fax, scanner, document server

infotec IS 2135 / IS 2145





Future proof

Whether copying, printing, faxing or scanning, the IS 2135 and IS 2145 have been designed to sit at the heart of your network. And thanks to state-of-the-art web-based document management, both systems deliver tangible time, money and space savings.

Flexible interfaces guarantee seamless integration into any IT environment and open up new and more efficient communication paths, such as the scanning and distribution of documents as email attachments, LDAP support and paperless, serverless fax dispatch. Both the IS 2135 and IS 2145 also provide professional finishing and outstanding output quality.

The IS 2135 and IS 2145 are essential, productive office solutions which deliver both short and long term benefits to your business.



Fast and economical digital copying:

- IS 2135: up to 35 pages per minute
IS 2145: up to 45 pages per minute
- Up to 600 dpi resolution, 256 grey scales
- Powerful sorting and finishing options
- Flexible paper supply up to 3,550 sheets max.
- New environmentally friendly polyester polymer toner for brilliant output quality



Network printing at an economical copying price:

- Up to 35/45 pages per minute
- Printing up to A3 format - including duplex
- Driver interface optimised for popular office applications
- Job spooling, job binding (with RPCS - Refined Printing Command Stream)
- Flexible interfaces:
Ethernet 100 Base-TX/10 Base-T,
parallel bi-directional
Options: Wireless LAN IEEE802.11b, USB 2.0,
Bluetooth or FireWire IEEE 1394 x 2 port, 6 pin



Network-based fax communication:

- Multi-port: up to 3 super G3 lines
- Paperless, serverless faxing, fax forwarding via email
- Internet faxing
- Up to 2,000 quick/speed dials
- New LAN-fax combined with printer/scanner and fax module: cover page editing and address book



Black & white scanning up to 600 dpi resolution:

- Scanning in TIFF, TIFF-F, Multipage, PDF, JPEG
- Network scanning with ScanRouter
- Scan-to-HDD (Hard Disk Drive)
- Scan-to-email with LDAP-support; no additional server or software required
- Scan-to-folder without installation of additional software
- TWAIN driver



Central document management across the entire network:

- State-of-the-art web-based document management with WebImage Monitor
- Merging of file formats from different applications into a single print job

An efficient office environment

Printing at copying price

The optional printer/scanner module transforms both the IS 2135 and IS 2145 into fast network printers. The result is significantly higher output speeds than conventional printers plus document processing and finishing - and all just as economical as copying.

LDAP: unlimited address book access

LDAP technology delivers unlimited address book access by connecting directly to a company's central address book. Addresses are accessed instantly and there is no need for local address book maintenance. Numerous search criteria mean email addresses are quick and simple to find, even for new recipients.

RPCS: Versatile user-interface

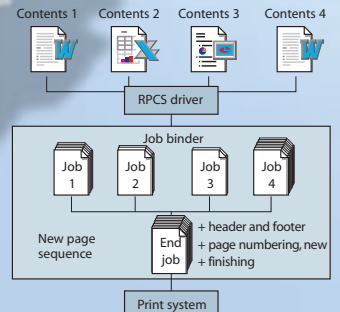
RPCS has been specifically developed to print from popular office applications and can be custom-adapted to suit specific document management needs. Just a click on the relevant RPCS symbol starts the print job, including all finishing functions. Printer languages include PCL5e, PCL6 and optionally Adobe PS 3, allowing printing from all popular operating systems.

Seamless network integration

Universal interfaces allow platform-independent interaction between different applications:

- Standard, bi-directional parallel interface for direct connection to the workplace PC/print-server and standard Ethernet 100Base-TX/10Base-T for integration in existing networks
- Optional interfaces for optimum flexibility: Wireless LAN IEEE802.11b* or Bluetooth* for wireless communication, FireWire IEEE 1394* x 2 port, 6 pin for setting up a separate network, USB 2.0*
- Support for standard network protocols such as TCP/IP, IPX/SPX, AppleTalk SMB and NetBEUI (only with SmartDevice Monitor)

* Only one optional interface can be installed



The document server: optimise work-flow

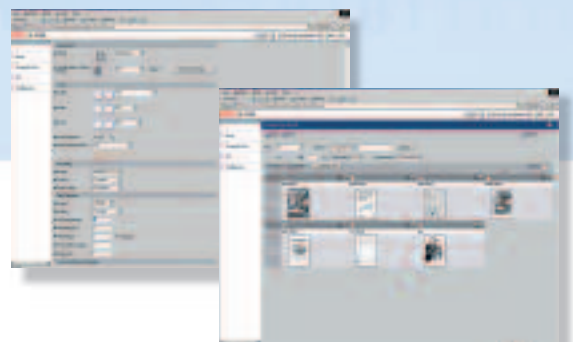
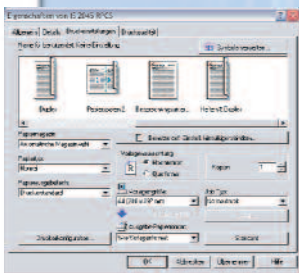
Archiving, management, storage, duplication, repeat printing, searching, deletion and forwarding of files and documents, combining or merging of files or file formats into one print job - the integrated document server and the software package make the long awaited digital office a reality.

Test printout, confidential printing and electronic sorting further expand the document server's functionality.

State-of-the-art web-based document and device management across the network

The systems' enhanced WebImage Monitor interface provides easy access to documents via a clearly designed user-interface, without the need to install additional software.

Alter network settings, manage, process, forward, delete or print files stored on the document server all from a standard web browser such as Internet Explorer or Netscape. Manage an email address book and monitor the job log or machine status directly from the workplace PC, without having to invest in and install additional software. Plus view, print, download, forward or delete incoming fax messages. The WebImage Monitor brings document control right to the desktop.



Features

A new way to scan

The optional printer/scanner module turns the systems into real network scanners with a scanning speed of up to 36 (TWAIN driver) or 52 (ScanRouter, scan-to-folder, scan-to-email) pages per minute at 600 dpi.

Scan-to-HDD: via the document glass or the ARDF, paper-based documents can be converted into digital data, and saved directly to the hard disk for further processing as TIFF, MultiPage-TIFF, JPEG or PDF files.

Scan-to-email: scanned data is sent as an email attachment to any email address*.

Scan-to-folder: scan documents to any shared folder on the LAN for fast, simple distribution*.

Paperless and serverless fax dispatch

The fax option offers efficient network-based fax communication. The multi-port allows simultaneous use of up to 3 lines. Incoming fax data can be stored in the SAF memory, or forwarded to any email address, without an additional server. The Weblmage Monitor or DeskTopBinder allow fax data to be viewed, deleted, printed (Weblmage Monitor only) directly from the desktop or downloaded onto a PC.

PC faxing

The optional printer/scanner and fax modules include a standard PC faxing function, which allows fax messages to be sent directly from the PC via the LAN. This saves printing the fax message before distribution. The LAN-fax driver's processing function allows personalised cover sheets to be created, and the LAN-fax address book can also process CSV files, allowing import and export of address book data.

Internet faxing

The optional printer/scanner and fax modules also add Internet faxing capability. Internet faxing sends fax communications over an established data network, significantly reducing, if not eliminating, costly call charges. Internet faxes and send/receive reports arrive as email reducing the need for printing and, unlike regular email, Internet faxes are received complete with important header and footer information.

* No additional software necessary



Digital technology	High quality input and output (copy and print 600dpi), extensive range of editing functions, diverse stamping functions, electronic sorting, text, text/photo and photo modes, multiple special functions
Scan once - print many	Protects the source document - consistent output quality, reduced sound level
Touch-screen LCD display	Simple and convenient function control, clear text-based operator guidance
Innovative GW architecture	The central control unit can be extended to include fax, printer and scanner functions
Powerful software components	Convenient document management directly from the desktop
Browser-based Weblmage Monitor	No need to install additional software: <ul style="list-style-type: none"> - Reading, printing, deletion and downloading directly from the document server via the pc - Reading, downloading, printing and deletion of incoming fax messages - Address book control for scan-to-email - Network settings, job log, machine status - Security settings: password, access control, IPP authorisation
Document server 20 GB hard disk	<ul style="list-style-type: none"> - Intelligent management (scanning, storage, archiving and distribution) of files and documents across the entire network - Access from every connected PC - Combine copy and print jobs - Merge files and documents from different applications - Extended print functions: confidential printing, test print, electronic sorting
Automatic document feeder	Up to 80 source documents can also be read in batches
Duplex unit	Automatic double-sided copying and printing at up to 35/45 pages per minute
Paper capacity up to 3,550 sheets	Non-stop printing and copying - including large print runs
Paper feed from up to 6 different trays (incl. bypass)	Flexible material usage. Up to six varieties of paper can be processed simultaneously in a single copying job
Online finishing	Three different finisher models allow brochures to be produced with a central fold and saddle stapling, traditional stapling, sorting and punching, in both copy and print modes
User Defined Pages	Assign different trays to different pages or sections to output a single document in a variety of media
Flexible operating systems	<ul style="list-style-type: none"> - PCL5e, PCL6 and Adobe PS 3 (optional) guarantee printing from all popular Windows, Mac and Linux applications - RPCS supports Windows applications
Printer/scanner module	<ul style="list-style-type: none"> - Up to 600 dpi network scanner, scan-to-HDD, scan-to-email, scan-to-folder, without additional software. - Seamless integration into any IT environment thanks to flexible interface - Cross-platform printing
LDAP support	Link directly to a central address book - search by department, word end, word start and more
Enhanced fax module	Confidential send and receive, double-sided transmission (with ARDF and memory expansion), as well as integrated telephone directory functions (up to 2,000 fax numbers), fax forwarding and more

Instant, increased productivity

Delivering outstanding quality, blistering performance and unrivalled productivity, the infotec IS 2135 and IS 2145 digital communication systems are highly flexible and easy to use. Both systems offer web-based document and device management as well as greater functionality than comparable multifunction systems. The innovative GW controller architecture (Ground Works) also means basic digital copiers with integrated 20 GB hard disks can be upgraded to allow multifunctional services such as printing, scanning and faxing, as well as paperless and serverless PC or LAN faxing.

Outstanding quality even when copying

The new polyester polymer toner produces razor sharp output in the finest detail at up to 600 dpi and with 256 grey scales. Multiple digital editing and special functions allow pristine results for virtually any task.

Non-stop performance

Save valuable time with *scan once - print many*. Source documents are read only once and output from the digital memory with a consistently high reproduction quality of 600 dpi.

Blistering speed

Quick Start-Up timesaving technology ensures exceptionally fast warm-up times and an incredible first copy within 4.5/3.6 seconds (IS 2135 and IS 2145 respectively). The direct duplex process allows high output speeds (IS 2135 35 ppm, IS 2145 45 ppm). Numerous sets of documents can be scanned in no time at all using the optional document feeder (ARDF).

Safe and secure

For securing confidential and classified information, the new DataOverwriteSecurity function automatically overwrites documents stored on the hard disk when the print job is complete. With the HDD-erase function enabled, the IS 2135 and IS 2145 deliver all the benefits of digital technology with the added security of an analogue system.



Continuous paper supply

Fast throughput demands a large paper supply. The IS 2135 and IS 2145 boast two trays of 500 sheets and a bypass of 50; 1,050 sheets as standard. Two additional paper trays and a large-capacity tray increase the paper supply to 3,550 sheets.

Versatile formatting

Electronic sorting ensures that sets of copies are clearly separated; portrait and landscape formats are assigned automatically. Automatic paper conversion also allows print jobs in letter format to be automatically converted to A4 - and vice versa - where letter paper is not available.

Flexible finishing

As well as three optional finishers that each deliver complex sorting and stapling options, the IS 2135 and IS 2145 include new User Defined Pages functionality (PCL only). Via a simple user-interface, this feature allows multi-page documents to be output in a variety of media by assigning different paper trays to each set of pages.

Brochure production

With only a single mouse click on the RPCS printer driver, the optional booklet finisher automatically produces brochures with folding and saddle stapling.



Technology

- Flatbed scanner utilising CCD technology
- Electro-photographic dual laser
- New polyester polymer toner

Functions

- Digital copier
- Laser printer
- Scanner
- Document server
- Super G3 fax

Resolution

- Copying: up to 600 dpi, 256 grey scales
- Printing: up to 600 dpi
- Scanning: 100 to 600 dpi, 256 grey scales
- Faxing: up to 400 x 400 dpi

Output speed

- IS 2135: up to 35 A4 pages per minute
- IS 2145: up to 45 A4 pages per minute

Paper: capacity, formats and weights

- Standard: 2x 500 sheets, A5 - A3, 64 - 105 gsm
- Bypass: 50 sheets, A6 - A3, 52 - 163 gsm
- Duplex: A5 - A3, 64 - 105 gsm
- Options:
 - Trays: 2x 500 sheets, A5 - A3, 60 - 105 gsm
 - LCT: 1,500 sheets, A4, 60 - 105 gsm

Output capacity (A4, 80 gsm unstapled)

- Standard: 500 sheets (with bridge unit 250 sheets)
- Internal stacker for fax output (optional): 125 sheets
- Finisher SR790 (option): 1,000 sheets
- Booklet finisher SR890 (optional): 1,000 sheets
- Multi-tray finisher SR880 (optional): 2,000 sheets

Document server

- Maximum storage capacity:
 - Copying: 2,500*1 pages, printing: 9,000*2 pages
 - Scanning/faxing: 9,000*3 pages
- Functions: archiving, forwarding, repeat print, file name change, file deletion, file processing, documents merging, scan to document server, scan-to-email

Dimensions, weights, power supply

- Size (W x D x H): 670 mm x 650 mm x 720 mm
- Weight: < 79 kg
- Power supply: 220-240V, 50/60 Hz
- Power consumption: < 1.5 kW
- Electronic and mechanical counters

Software tools

- DeskTopBinder V2 Lite, ScanRouter V2 Lite
- SmartDevice Monitor for Client and Admin
- LAN-fax M1, 1394 Utility
- Printer utilities for Mac and TWAIN drivers

*1 ITUT No.4 chart, *2 Lyla chart, *3 ITUT No. 1/200dpi MMR chart

Copier specifications

- First copy: IS 2135: approx. 4.5 seconds
IS 2145: approx. 3.6 seconds
- Warm-up time: IS 2135: approx. 15 seconds
IS 2145: approx. 20 seconds
- 64 MB working memory, 20 GB hard disk
- Copy pre-selection up to 999 copies (simplex and duplex)
- Operator guidance via monochrome LCD display
- Copier mode:
 - Text, photo, text/photo (print, copy, photography), card modes, light colours, second generation
 - ADS (Auto Density)
 - Manual or automatic density selection
 - Zoom 25% to 400% in 1% steps
 - Enlarge/reduce in 12 fixed stages
 - Cover page function, separator for OHP transparencies, stitching
 - Archiving (on integrated document server)
 - Job start while scanning in the source documents

Special functions

- Text, photo, text/photo modes
- Edge/middle deletion, image rotation, positive/negative centring, image brightness, contrast
- Combining of source documents:
 - Simplex: 2 in 1, 4 in 1, 8 in 1
 - Duplex: 4 in 1, 8 in 1, 16 in 1
 - Imposition of A4/A5 booklets

Convenience functions

- 100 user programmes (500 max. with optional memory expansion)
- Electronic sorting, rotational copying and sorting
- 1 scan - multiple copies, test print
- Auto start, job pre-selection
- Automatic paper selection and page alignment
- Numerous stamp functions
- Pause/interruption, energy-saving mode

Options (Quantity at 80 gsm paper weight)

- 1 ARDF (DF76): 80 sheets
 - Simplex: B6 - A3, 40-128 gsm
 - Duplex: B5 - A3, 52-105 gsm
- 2 Platen cover, type 3800C
- 3 Paper trays (P5530) 2x 500 sheets
- 4 High-capacity tray (RT45) 1,500 sheets
- 5 1,000-sheet finisher (SR790), up to 50 sheet stapling in up to 3 positions
- 6 Booklet finisher (SR890): 1,000 sheets A5-A3, up to 30/50 A3/A4 sheet stapling in 3 positions
 - A4 or A5 brochures: up to 15 sheets, 2-staple saddle stapling
- 7 Multi-tray finisher (SR880) 2,000 sheets, up to 50 sheet stapling in up to 4 positions
 - Hole punch unit, 2/4-hole
 - Offset output, 250/125 sheets A4/A3
 - Bridge unit (type 2045)
 - Internal stacker for fax output (PT330), 125 sheets, A5-A3, 60-105 gsm
 - Printer-scanner module
 - Fax unit type 2145, additional G3-module, 32 MB SAF memory

Printer/Scanner module (optional)

- Power-CPU RM7065A, 300 MHz
- Prerequisite 192 MB printer memory (128 MB additional memory)
- 20 GB hard disk (basic unit)
- RPCS, PCL6, PCL5e, Adobe PostScript 3 (optional)
- Network interface:
 - Standard: - 100BASE-TX/10BASE-T (Ethernet RJ-45)
 - - Parallel bi-directional IEEE 1284 (ECP)
 - Options: - FireWire IEEE 1394 or Wireless LAN IEEE802.11b or USB 2.0 or Bluetooth
- TCP/IP, IPX/SPX, AppleTalk SMB (auto switching) NetBEUI (SmartDevice Monitor required for client) NetBIOS via TCP/IP
- Special features: Job spooling, job binding (with RPCS)
- **Printer1 drivers**
 - Windows 95/98/Me/2000/XP/NT4.0
 - Macintosh (PS3 option only) OS 8.6., OS X, OS X Native
- **Scanner specifications**
 - Scan-to-email, scan-to-folder, ScanRouter network delivery server: 52 ppm (A4 LEF/Text/200dpi, MH compression); TWAIN driver: 36 ppm
 - Scan-to-email (2,000 email addresses can be stored; LDAP support); scan-to-folder (up to 2,000 folders can be stored)
 - Scan mode: text, text/photo, photo, grey scales
 - Resolution: 100 to 600 dpi
 - Single page: TIFF, JPEG; Multi-page TIFF, PDF

Fax specifications (optional)

- Compatibility: ITU-T (CCITT) G3, optional multi-port 3x G3
- Resolution:
 - 8 x 3.85, 8 x 7.7 l/mm, 200 x 200/100 dpi (standard)
 - 8/16 x 15.4 l/mm, 400 x 400 dpi (optional)
- Transmission time:
 - 3 seconds (200x100dpi), 2 seconds with JBIG (standard A4)
 - approx. 0.43 seconds (standard A4)
- Scan speed:
 - Modem speed: 33,600 - 2,400 bps
 - Compression method: MH/MR/MMR, Opt.: JBIG
 - SAF memory standard: 4MB (320 pages)
 - Maximum: 28 MB* (2,240 pages)
 - Page memory (standard): 8MB
 - Maximum: 16 MB*
 - Memory backup: 1 hour
 - 100 user programmes (200 programmes max.)
 - Speed dials, name dials (standard) 500, 1,200 with JBIG module, 2,000 with printer-/scanner module
 - 100 group dials, (500 numbers/group max.)
 - Forwarding faxes to email; including forward inbound faxes to a pre-programmed address; create designated recipients; forward transmission results to designated recipient
 - Numerous convenience functions such as fax stamp, TTI/RTI, CSI, dual access, forwarding, confidential send and receive, double-sided receive, LAN-Fax M1

*32 MB SAF memory required

