

infotec

Digital Network

*Flexible and Economical:
copying, printing, faxing & scanning*

infotec IS 2022/IS 2027





Maximum flexibility

The *infotec IS2022* and *IS2027* systems represent a new generation of powerful multi-functional devices designed to handle information transfer in the office.

The basic models are productive and reliable digital B/W copiers, operating at speeds of 22 and 27 ppm respectively, with high quality 600 dpi resolution. Owing to the flexible, modular design, they can easily be upgraded in a variety of ways to provide: printing, full network connectivity, network scanning, faxing, PC-faxing, document storage and archiving, file merging, duplex printing and professional finishing.

In addition to the tried and tested functions of; copying, printing and faxing, the office environment can now benefit from the innovative new facilities to revolutionise the document workflow, such as:

Large Touch Screen Display

Unique in their class, the *infotec IS2022* and *IS2027* systems feature a large and clearly designed user panel.

At the touch of a button, you can conveniently choose between the various functions, such as

- 1) Copying
- 2) Document server
- 3) Faxing
- 4) Printing
- 5) Scanning

The most important settings for your selected function can be selected directly via the user-friendly touchscreen display.

Scanning

Using the systems' optional network scanner, the ever-increasing piles of paper in the office can be converted to digital format, saving time, space and improving the flow of information by making documents available to whoever needs access to them.

Storing documents and/or files

Large volumes of data can be stored in the optional document server for use as and when required.





■ **Document management direct from the Desk**

The software utilities supplied with the printer and scanner upgrades allow users to access, manipulate and manage the files stored on the IS2022/27 Document Server directly from the PC

■ **Output and distribution**

In conjunction with the PC, the documents stored in the Document Server can be: reproduced, re-printed, searched for, modified, deleted, faxed, transmitted and sent electronically to connected PCs through the network, as often as required.

■ **Mixing file formats**

Files from different applications, as well as hard documents scanned in, can be combined into a single print job on the document server, or PC, without opening the associated application.

Overview of highlights

- 22/27 page per minute copy and print speed (A4) in simplex and duplex (IS2022/IS2027)
- Time-saving Quick Start-Up Technology: warm-up time only 15 seconds
- First copy/print in only 4.9 seconds
- "Scan once – print many" technology
- Genuine high quality 600 dpi resolution and 256 grey scales

- Special digital functions such as: text, text/photo or photo mode, automatic paper format selection, automatic image rotation, sorting etc
- Clear, large touch screen display for ease of use
- Flexible paper supplies: 1,000 sheets as standard, 3,100 maximum
- Copies and prints onto paper sizes from A6-A3, and paper weights of 52-157 gsm
- Optional 6 GB document server for convenient storage of all types of documents
- Printer upgrade providing a fast, printer up to A3, which can be fully networked to provide access to all users
- Network scanner option; 600 dpi resolution, 256 grey-scales, also available to all users
- A sophisticated suite of software for Document and Print management
- Multi-port fax option allowing for up to 3 lines, one of which can be ISDN
- 100 User codes for monitoring individual use, upgradeable to 500
- A choice of finishers – 500 or 1,000 sheet capacity, for professional sorting and stapling
- Uncompromisingly productive and economical
- Stamp functions for adding page numbers, dates, key words, logos etc to documents
- Very Environmentally friendly - Ozone-free, with extremely low power consumption





Printing on tap

An optional printer module upgrades the systems to high-powered 600 dpi A3 laser printers.

Full network support

Universal interfaces enable different applications to co-exist regardless of platform:


- Simple connection to standalone PCs or standard networks:
 - *Standard bi-directional parallel interface* for use as a PC workstation printer.
 - *Optional Ethernet 100Base-TX/10Base-T network card* for integration into existing networks.
 - *Optional IEEE 1394 FireWire interface* to set up separate networks with data speeds up to 400 Mbps.
- Support for standard network protocols such as TCP/IP, IPX/SPX, AppleTalk and NetBEUI (only with SmartNet Monitor)
- Printer drivers for Win 9x; NT 4.0; 2000; Me, Macintosh from OS 7.6.1.
- Since the *infotec IS2022* and *IS2027* systems support Unix (Sun Microsystems Solaris, HP-UX and Red Hat Linux), they are also ideal for all technical and scientific printing tasks, in addition to use in normal office environments.

Automatic paper format conversion

This useful feature automatically converts letter format print jobs into A4, if letter paper is not available, or vice versa. This function is particularly useful, for example, when a printout is required of information and documents from the Internet often set up in letter format.

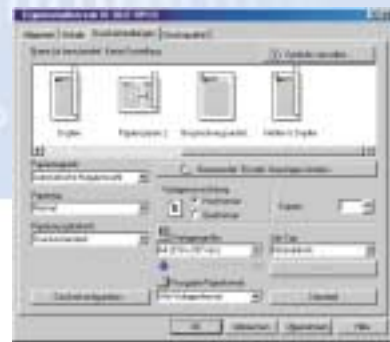
Always the right language

A networked business environment needs output systems that support several page description languages. The *infotec IS2022* and *IS2027* systems support all standard languages and set new standards of user-friendliness and speed:

- *PCL5e* and *PCL6* for rapid printout of typical documents.
- *Adobe PostScript 3* for precise output of PostScript DTP files and fast printing of PDF files. 
- *RPCS (Refined Printing Command Stream)* offers higher speeds and ease of use. In virtually all Windows applications, it achieves a higher print speed compared with other page description languages. A unique driver interface means standard print jobs can be submitted with just one click on a pre-defined or user-defined icon. No need for complicated settings.

Optional hard disk for increased printer functionality

- *Proof Print*: in Proof Print mode, the *infotec* systems first produce a single copy. If you aren't satisfied with the result, change the settings and request another copy. Once you are happy with the result, set up the required print run. A feature that saves both time and paper!
- *Confidential printout*: safeguards your documents from unauthorised access. The data sent to the *infotec* systems must be unlocked by entering a password prior to printing.
- In addition, the optional hard disc allows *electronic sorting* even in print mode, storage of documents, as well as *macro and font download*.



RPCS features a user-friendly driver interface. Click on the appropriate RPCS icon to start a print job.



Printer specifications

Not just the bare fax

The fax option upgrades these infotec systems to advanced Super G 3 fax systems, with a further option to add an extra G3 and /or ISDN line to create a MULTIPORT system, which can use up to 3 lines simultaneously. The advantages for you:

- You can send and receive faxes at the same time.
- During transmission from memory, another message can be sent at the same time using direct transmission. No need to wait until the machine is free.

Advanced features include instant transmission, delayed transmission, confidential sending and receiving, book fax, double-sided transmission (using ARDF) and integrated phone book (for up to 1,200 fax numbers).

Digitalising and storing files

The optional printer/scanner module upgrades the *infotec IS 2022* and *IS 2027* to genuine 600 dpi network scanners. Using the document glass or the document feeder (ARDF), up to 29 pages (Twain driver) or 42 pages (ScanRouter V2 lite) per minute can be scanned, transmitted within the network or stored on the optional document server for later use. *DeskTopBinder V2 lite* (supplied with the printer or printer/scanner) can be used to access the documents, manipulate them and/or combine them with other files.

PC fax

The optional printer and scanner modules with fax and optional NIB provide a PC fax function across the network, with no need for additional software.



With these modules, you can send fax messages directly from the PC via the LAN. Sending faxes from the PC requires fewer steps; consequently, there is no need to print out the fax beforehand.

Printer specifications IS2022; IS2027 (option)

Requirement	Optional 64 MB memory expansion and printer or printer/scanner module
Sustained print speed	22 A4 ppm (IS2022) 27 A4 ppm (IS2027)
CPU	RM5231, 200 MHz
Printer interfaces	Standard: Parallel Port IEEE1284 (ECP) Options: Network card: Ethernet 100Base-TX / 10 Base-T; 1 x RJ45 Operating systems: Novell NetWare 3.12, 3.2, 4.x, 5.0; Windows NT4.0; Windows 95/98/Me/2000, Mac OS 7.6.1 and higher, Unix (Solaris 2.51/2.6/7/8, HP-UX 8.x/9.x/10.x/11.0, Red Hat Linux 6.x/7) FireWire interface IEEE1394 (6-pin), 2 ports 400Mbps/ 200Mbps/ 100Mbps
Printer language	PCL5e, PCL6, RPCS and PostScript 3 (optional)
Printer drivers	PCL5e/PCL6, RPCS: Windows 95/98/Me/2000/NT4.0 PS3: Macintosh, Windows 95/98/Me/2000/NT4.0
Print resolution	PCL5e 600/300 dpi PCL6 600 dpi RPCS 600 dpi PS3 (option) 600/300 dpi
Memory	96 MB (32 MB Std. + 64 MB optional)
Integrated hard disk	6 GB (option)
Network protocols	TCP/IP, IPX/SPX, AppleTalk (auto switching), NetBEUI in conjunction with SmartNet Monitor, (optional network card required)
Utility programs	DeskTopBinder V2 Lite, SmartNetMonitor for Admin and Client, LAN-Fax M1, 1394 Utility, Printer utilities for Mac, TWAIN driver (for printer/scanner module) ScanRouter V2 Lite (for printer/scanner module)
Control functions (options)	Built-in WebServer; Telnet Server; Lpd daemon, IPP daemon

Network scanner specifications (option)

Requirement	Optional 64 MB memory expansion, printer/scanner module and optional network card
Scan speed	using ScanRouter V2 Lite software: 42 pages/minute (A4 landscape, 200 dpi) using Twain driver: 29 pages/minute (A4 landscape, 200 dpi, MMR)
Resolution	600 dpi, 256 grey-scales
File formats (ScanRouter software)	TIFF and TIFF-F (MH, MR, MMR), Multipage TIFF, PDF, JPEG
Interface	Optional network card

Fax specifications SUPER Group 3 or ISDN Group 4 (option)

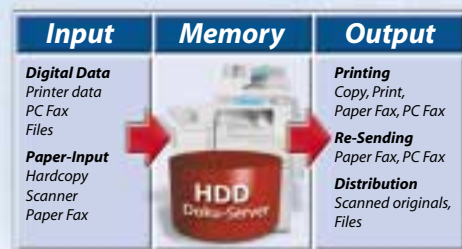
Requirement	Fax kit
Connection (Multiport)	PSTN, PABX, ISDN (option); up to 3 lines can be operated simultaneously (2x G3 + 1x G4)
Compatibility	ITU-T (CCITT) G3, G4 (option)
Resolution	Standard: 8 x 3.85 l/mm, 200 x 200/100 dpi Option: 8/16 x 15.4 l/mm, 400 x 400 dpi
Transmission speed	G3: 3 seconds (with optional JBIG, 2 seconds) G4: 3 seconds
Scan speed	< 0.66 seconds (200 x 100 dpi, A4)
Modem speed	33.6 Kbps (SUPER G3); 64 Kbps G4 (option)
Data compression	MH, MR, MMR, JBIG (option)
Memory capacity	2 MB SAF memory as standard and 4 MB pages memory; Option: 32 MB (of which 26 MB for SAF memory)
Back-up:	1 hour
Simplified dialling	400 One-Touch Dialling buttons; Optional: 1200 One-Touch Dial or 1000 One-Touch + 200 Speed Dial codes (with JBIG option)
Group Dial	64 groups (500 numbers per group)
Convenience functions (selection)	Telephone book, last number re-dial, send later, send on, Dual Access, confidential sending and receiving, batch transmission, chain dialling, double-sided sending and receiving, detailed journal
Special features	Transmission starts even while data is being scanned.

Document management

Each day we receive vast quantities of information from a very wide range of sources: as text files or image files, as hardcopy, by e-mail or through the network.

All this data is processed in one way or another - printed, copied, faxed, distributed internally or stored.

The deluge of information makes it even more difficult to access specific documents directly. And once the required document has been located, further processing once again takes up a lot of time, as the laser printer may not be located right next to the copier, or the fax machine is perhaps on a different floor, and special requirements (such as stapled copies or booklets with cover sheets) demand additional manual work. Such a loss of productivity is not necessary.



The solution:

the optional document server for the *infotec IS 2022* and *IS 2027* systems.

The advantages for you:

Centralised and transparent document management!

File management at the PC workstation

Your workgroup or department's print, copier, scan and fax data can be stored on the optional document server. This data can then be displayed and managed on the PC monitor using the SmartNet Monitor, DeskTopBinder V2 Lite and ScanRouter V2 Lite (software package included with the optional printer/scanner module). This means efficient document management right from your desk. The infotec systems act as a focal point for your team's data, to which all staff can contribute information which can then be viewed, processed and forwarded as required.

- Scanned documents are numbered in ascending order, or can be given 8-character filenames and usernames.
- 6 GB storage capacity (up to 9,000 pages).
- Proof print and confidential printout.
- File Merge: combine several documents from different applications into a single print job (Including scanned hard copies with electronic files such as Word documents).

Monitor the status of digital systems and print queues on the network with SmartNet Monitor.

ScanRouter V2 Lite automatically forwards scanned documents to recipients (not shown).

DeskTopBinder V2 Lite allows you to view, process, print and electronically distribute documents from your PC.

Job Binding combines files from different sources and applications into a single print job.





DeskTopBinder V2 Lite

is document management software for your PC workstation. It simplifies the management of different files and documents - whether these are images, whole Office files, text documents, spreadsheets or presentations. Options include:

- Network access to all documents and files stored in the optional document server - with and without password.
- Preview of the first page of the stored documents.
- Advanced document search by username or filename and date of creation.
- Job Binding: organising and merging files from different applications such as: Microsoft Word, Excel, PowerPoint, PDF files, incoming fax messages and/ or scanned documents.



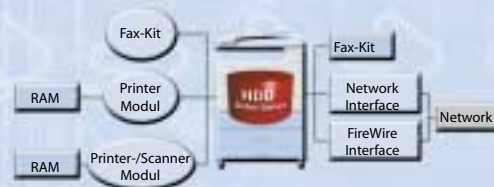
Job Binding combines files from different sources and applications into a single print job.

- New Office documents can be created and saved as DeskTopBinder lite documents, without opening the associated application.
- Deleting saved documents.
- Modifying filenames and usernames.
- Printing, faxing and electronic forwarding of saved documents.
- ScanRouter V2 Lite: Provides true network scanning, allowing hard copy images to be transformed to electronic files and stored, managed and distributed across the network as required. All users on the network can have an "inbox" where their documents are held.



Features – Benefits

Digital technology	High-quality input and output (copy and print 600 dpi), extensive editing and stamp functions, electronic sorting, text mode, text/photo mode and photo mode, numerous special features.
Scan Once - Print Many	Less wear and tear on originals, reduces the noise level, unlimited output with consistent quality.
Touchscreen LCD display	Simple and convenient controls, via a large, clear user interface
Innovative GW architecture	Software upgrades allow fax, printer and scanner functions to be added to the basic digital copier unit.



Expandable memory	<ul style="list-style-type: none"> - + 32 MB copier memory: extended electronic sorting, A3 duplex, duplex via ARDF, stamp functions - + 6 GB hard disk: intelligent document server - + 32 MB fax memory (for approx. 1,000 pages) - + 64 MB expanded copier memory and/or printer and scanner memory for using printer and scanner modules
6 GB hard disk (option)	<ul style="list-style-type: none"> - Real multi-tasking: scanning and printing at the same time. - Document server: store up to 9,000 pages. - Extended stamp functions: background numbering, pre-defined stamps, user-defined stamps <p>Extended print functions</p> <p>Confidential printing, proof print, electronic sorting, macro and font download</p> <p>Document server (with optional hard disk)</p> <p>Combination of copy and print jobs, storing documents, files, faxes and job settings, assign and modify filenames.</p>
Automatic document feeder	Up to 50 originals, even double-sided, can be fed in one batch.
Duplex unit (option)	Automatic double-sided copying and printing at 22 or 27 ppm.
10 copy jobs pre-programmable	Set up further jobs while one is running, i.e. increased productivity.
Paper supply up to 3,100 sheets	Uninterrupted printing and copying, even of big print-runs
Media supply from up to 5 sources	Flexible range of media. Process up to 3 media types in one document.
Finishing options	1,000-sheet or 500-sheet finishers for sorting and stapling complete sets of documents.
Flexible page processing languages	<ul style="list-style-type: none"> - PCL5e, PCL6 and PostScript Level 3 (option) guarantee printing from standard Windows, Mac and Linux applications. - RPCS exclusively supports Windows applications, increases data flow and is exceptionally user-friendly.
Open architecture	Cross-platform networked printing. The optional network card supports the operating systems Novell NetWare 3.12, 3.2, 4.x, 5.0; Win 95/98/Me/2000/NT4.0; Mac OS 7.6.1 and higher and Unix (Solaris 2.51/2.6/7/8, HP-UX 8.x/9.x/10.x/11.0, Red Hat Linux 6.x/7).
Network protocols	TCP/IP, IPX/SPX, AppleTalk (auto switching), NetBEUI (in conjunction with SmartNet Monitor)

Technical Data

General specifications IS 2022 and IS 2027

Technology	Flatbed with mobile CCD image-sensor area	
Scan element:	Electro-photographic 2-way laser with dual-component toner	
Print process:	Electro-photographic 2-way laser with dual-component toner	
Paper formats	DIN A5 - A3, bypass A6 - A3	
Paper weights	52 - 157 gsm	
Paper capacity	Standard:	2x 500-sheet cassettes
	1st tray:	1x 500 sheets, 60 - 90 gsm
	2nd tray:	1x 500 sheets, 52 -157 gsm
	Optional:	2x 500-sheet cassettes, 64 - 105 gsm or 1x 2,000-sheet paper bank, 60 - 90 gsm 100-sheet bypass, 52 - 157 gsm
	Maximum:	3,100 sheets
Output capacity	Standard:	500 sheets (with Bridge Unit 250 sheets)
	Optional:	Internal output tray: 125 sheets or 500-sheet finisher or 1,000-sheet finisher
User codes	100 (max. up to 500)	
Document server	with optional hard-disk (6 GB)	
Stamp functions	Date and page numbering	
+ opt. 32 MB memory	Pre-defined stamp functions: Copy, Urgent, Priority, For your Info, Preliminary, For internal use only, Confidential, Draft (in English only)	
+ HDD and 32/64 MB	Background numbering, user stamp and pre-defined stamp functions in 14 languages: Copy, Urgent, Priority, For your Info, Preliminary, Confidential, For internal use only, Draft	
Hard disk (option)	Document server, stamp functions and electronic sorting	
Dimensions/Weight	550 x 604 x 980 mm (W x D x H); < 62 kg	
Power supply	220-240V, 50/60 Hz	
Power consumption	< 1.5 Kw	

Additional options

A) ARDF document feeder	50 sheets (80 gsm), max. A3 Simplex: 40 - 128 gsm, duplex: 52 - 105 gsm, A5-A3
B) Internal hard disk	6 GB, for document server, extended functionality
C) 2 media cassettes	2x 500 sheets, A5 - A3, (60-90 gsm)
D) LCT high-capacity paper bank	2x 1000 sheets, A4, (60-90 gsm)
E) Finisher 1000 SR790 (60-157 gsm)	1000 sheets, A6-A3 + 250-sheet upper storage (80 gsm) Stapling up to 50 sheets, once or twice in 2 positions each for paper weights from 64 - 90 gsm
F) Bridge unit	For finisher 1000/500, 250 sheets capacity, A4, (60-105 gsm)
G) Finisher 500 SR820 (60-128 gsm)	500 sheets, B5-A3 (at 80 gsm) Stapling up to 30 sheets, 1 position for paper weights from 64 - 90 gsm
H) Duplex	A5-A3 (64-105 gsm)
I) Shift Tray	For shifted output
J) Bypass	100 sheets (52-157 gsm)
1-bin tray (not shown)	125 sheets, A5-A3 (60-105 gsm)
Lower cabinet (not shown)	For consumables

Copier specifications

First copy	4.9 seconds
Copier speed	22 cpm A4 (IS2022), 27 cpm A4 (IS2027)
Duplex (option)	Automatic (for paper weights 64-105 gsm)
Duplex speed	22 cpm A4 (IS2022), 27 cpm A4 (IS2027)
Resolution	600 dpi, 256 grey-scales
Standard memory	32 MB (+ 32/64 MB expansion and/or 6 GB HDD)
Integrated hard disk (option)	6 GB, for extended stamp functions, document server, electronic sorting up to 1000 sheets
Zoom	from the document glass: 25 - 400% in 1% steps from the ARDF: 25 - 200% in 1% steps
Enlargement/reduction	12 pre-defined settings (25%, 50%, 65%, 71%, 75%, 82%, 93%, 115%, 122%, 141%, 200%, 400%)
User interface	Clearly structured and generous LCD touchscreen display
User codes	100 (max. 500 with optional "User Account Enhance Unit")
Multiple copy	up to 99
Warm-up time	15 seconds
Electronic sorting	Standard 50 pages, with 32 MB memory 90 pages, 1000 pages with optional hard disk
Special functions	Text mode, photo mode, text/photo mode, stretching and compressing (directional or by percentage), positive/negative, image rotation, automatic media selection and page layout, image brightness/contrast, delete border/centre
Special features	Cover sheet, separator sheet for OHP transparencies, stapling with optional finishers (single or double in 2 positions), archiving (with optional document server + optional HDD), start job while originals are being scanned.
Combination of originals	Simplex: 2 in 1, 4 in 1, 8 in 1 Duplex: 4 in 1, 8 in 1, 16 in 1,

Printer specifications (option)

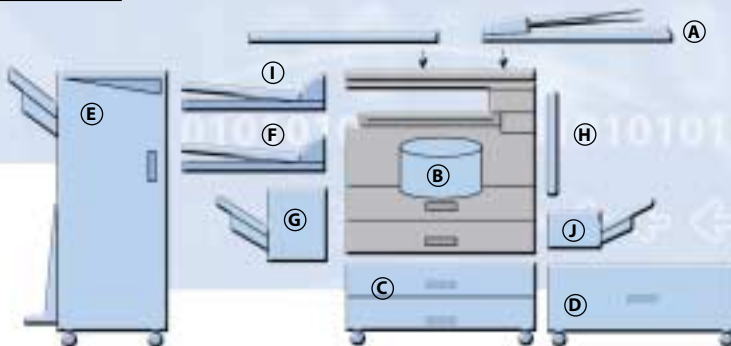
see technical data inside the brochure

Network scanner specifications (option)

see technical data inside the brochure

Fax specifications (option)

see technical data inside the brochure



Contact us

infotec

www.infotec-dealer.com

infotec and Danka are registered trademarks. Errors excepted and modifications reserved. Printed on chlorine-free bleached paper.